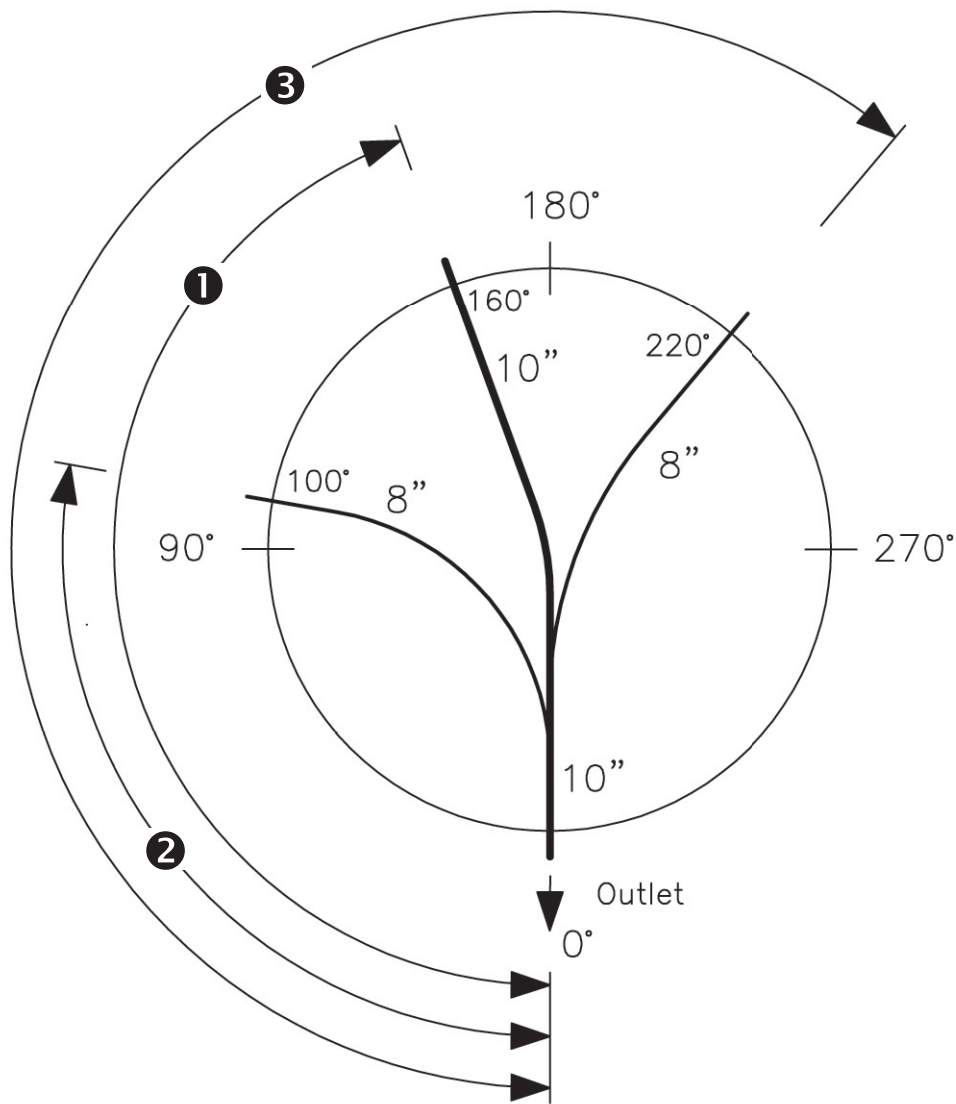
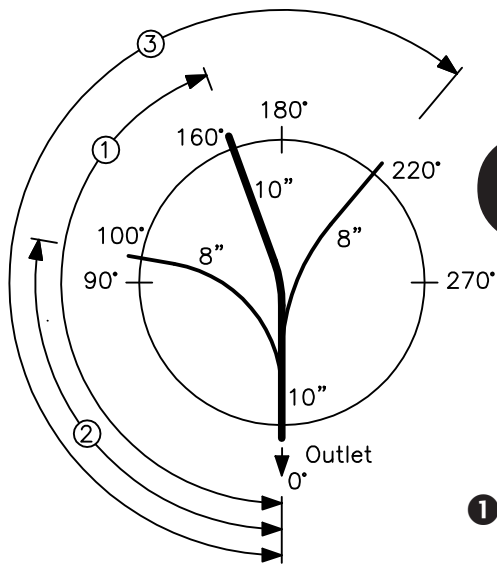


GU Manhole Base Liner

03/09

Procedures for ordering & Classification for pricing





GU Manhole

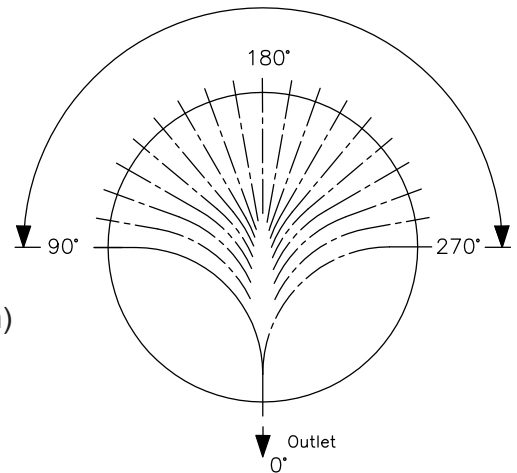
**Procedures for ordering:
Order Sequence:**

- ❶ Main Channel | ❷ 1st Lateral | ❸ 2nd Lateral

Standard Configuration - Classification for Pricing

Main Channel:

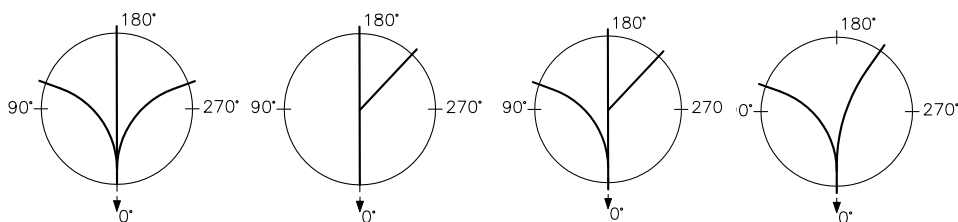
- 1] 10° increments from 90° to 270°; other angle configurations achieved with a deflection of 5° max. on inlet bells.
- 2] **Invert difference** - channel diameters (nom) 6" to 12" (150 - 300mm) - **0.1 ft (1.2" / 30mm)**
- 3] **Invert difference** - channel diameters (nom) 15" (375mm) and greater **flat - no elevation change**



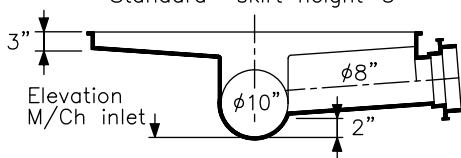
Lateral Channels:

Applies to main channel diameters (nom) 6" to 12" (150-300 mm)

Crown(s) of lateral(s) matched in relation to the crown of the outlet plus standard invert difference. The following drawings show some of the endless configurations.



Standard skirt height=3"



Invert difference of matched crowns between main channel inlet (largest pipe dia.) and lateral inlet(s).

Standard Combination Main Channel / Lateral			
Main Channel		Lateral	
inch	mm	inch	mm
6	150	6	150
8	200	6	150
		8	200
10	250	8	200
		10	250
12	300	10	250
		12	300

Base Liner

Nomenclature of the GU BASE LINER

Example configuration:

10" @ 0° x 10" @ 160° / 8" @ 100° / 8" at 220°

Non Standard Configuration - Classification for Pricing

Main Channel diameters (nom)

6" to 12" (150 - 300 mm):

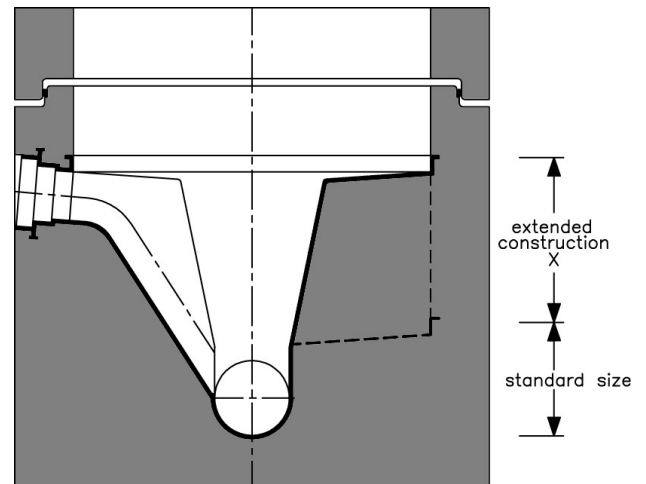
- Invert difference other than 0.1 ft plus all laterals of equal or lesser diameter are non standard
- Main channels from 0° to 89° and from 360° (0°) to 271° plus all laterals are considered non standard
- Lateral(s) between 0° to 89° and between 360° (0°) to 271°
- Crown of lateral(s) not matched in relation to the crown of the outlet plus standard invert difference
- Size of lateral(s) not conforming to the table of main channel/lateral standard configurations
- Lateral connection to the inside radius of a curved main channel
- Base liner bench higher than the standard construction (see drawing A)
- Extended skirt (see drawing B)

Main Channel diameter 15" (375 mm) and greater:

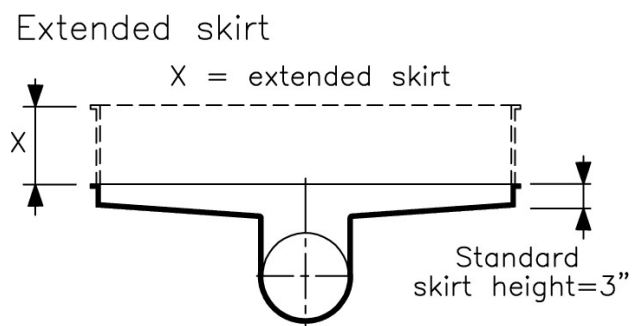
- Invert difference other than zero
- Main channels from 0° to 89° and from 360°(0°) to 271°
- All lateral channels
- Base liner bench higher than the standard construction (see drawing A)
- Extended skirt (see drawing B)

Note:

Pricing of main channels with an invert difference other than standard and/or laterals entering at a raised elevation (drawing A, extended construction) is calculated in the same manner as extended skirt (X) used with fully lined bases (drawing B).



Drawing A



Drawing B

Example price calculation:

[Refer to Drawings A and B]

①	Main channel: standard or non standard		\$
②	Lateral: standard or non standard		\$
③	Extended skirt (X)		\$