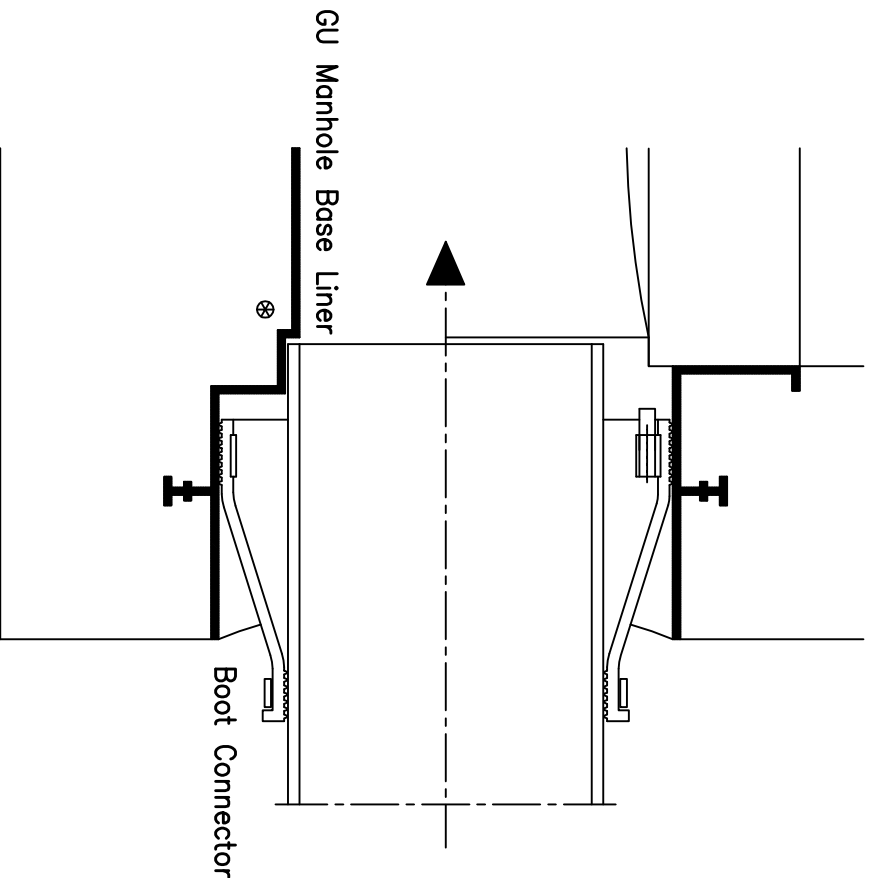


# GU LINER SYSTEMS

## GU Boot HUB/Flexible Boot Connectors/Pipe Installation Instructions



- 1) Clean GU boot hub
- 2) Install the boot connector in the hub as per the manufacturer's usual instruction. "Wedge" style expanders must be located within the access knotch at the top of the hub.
- 3) Miter spigot relative to required pipe deflection angle. DO NOT CHAMFER OR BEVEL END OF PIPE. DE-BURR ONLY.
- 4) Slip pipe into boot and orient to required deflection angle. Inspect pipe/channel transition for fit and invert alignment. If pipe will not "home" to the manhole base liner channel end, remove and re-miter. Tighten clamps around boot to secure and seal pipe/boot connection as per manufacturer's instruction. Backfill and compact around manhole base and pipeline as specified.
- NOTE: All pipe stubs awaiting pipe installation at a later date must be restrained.
- 5) Check for watertight connection; (vacuum testing or other approved method)

### IMPORTANT DESIGN FEATURE:

The flexible boot type connector is fitted into the GU boot hub monolithically bonded with the GU manhole base liner.

The hub extends to the outside profile of the precast concrete structure.

The design of the boot hub with an integral waterstop prevents groundwater infiltration between the precast concrete interface with the GU boot hub.

NOTE: The step<sup>⊗</sup> or pipe stop which is not unlike that found in the GU pipe connecting bell achieves pipe invert/channel alignment. This eliminates any vertical or up and down pipe adjustment leaving only capability for horizontal deflection.

Don't lubricate the boot connector or the GU boot hub